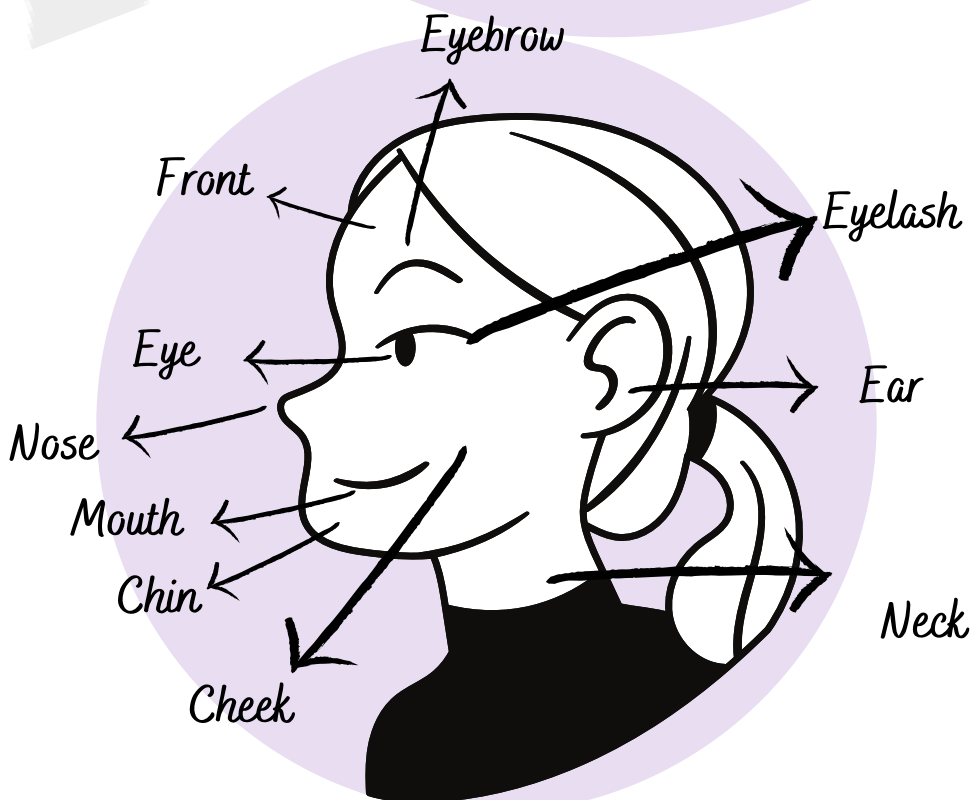
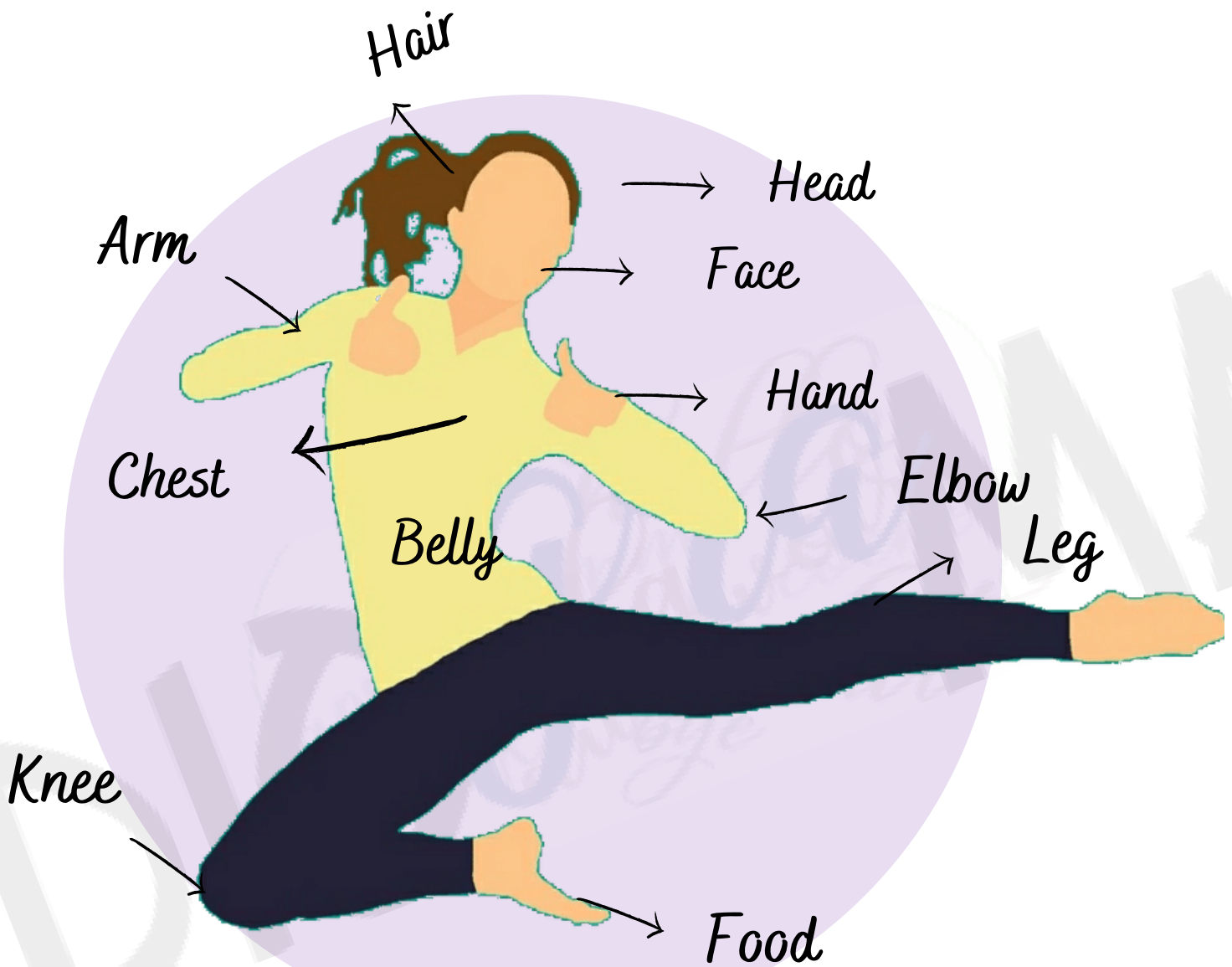
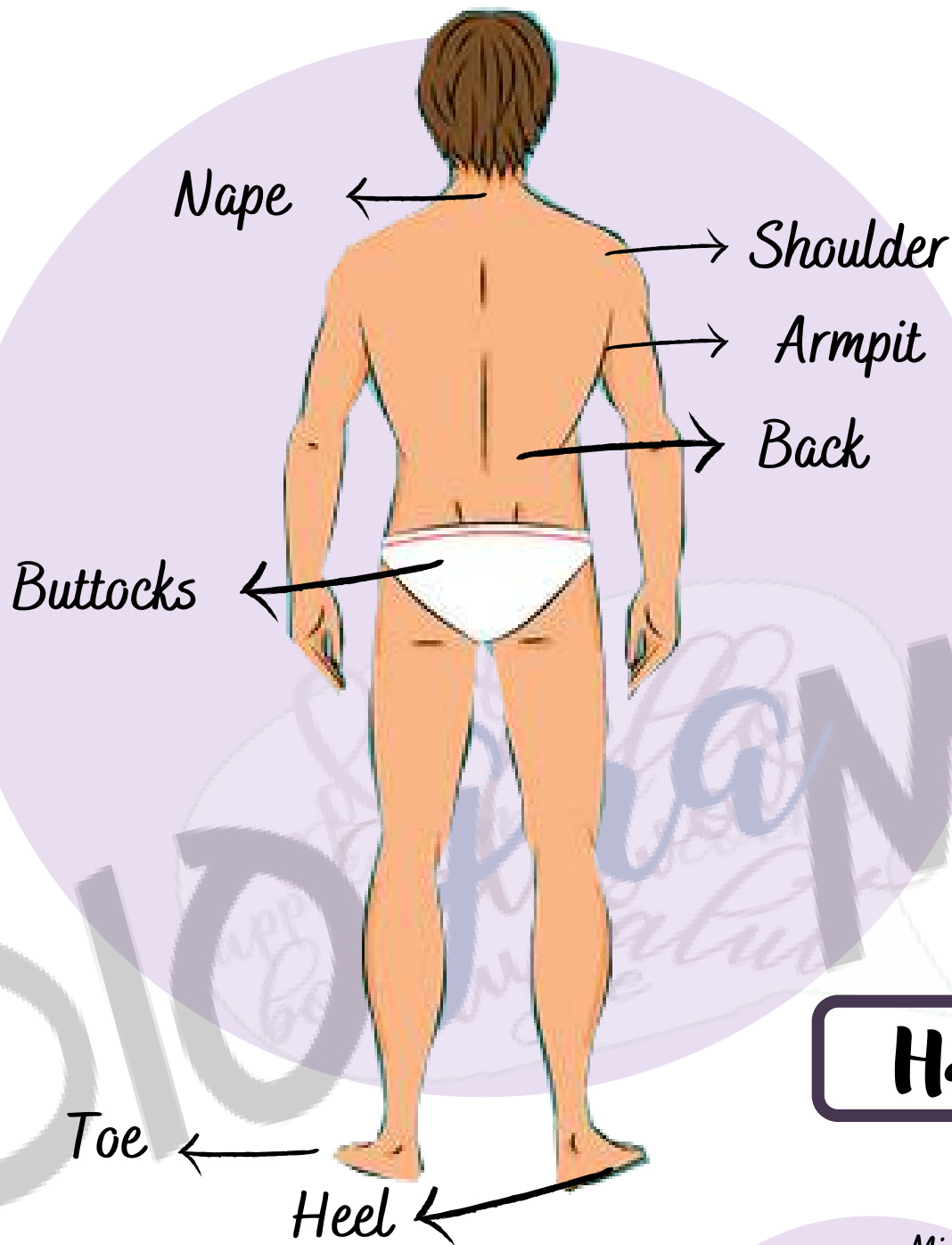


Body



Face

Bottom



Hand



COLOURS



RED



BLUE



YELLOW



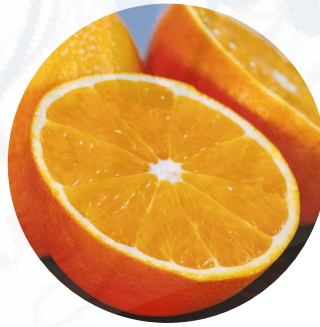
PINK



GREEN



VIOLET



ORANGE



WHITE



BROWN



GREY



BLACK

The weather

IT IS + ADV



IT'S COLD



IT'S HOT



IT'S GOOD WEATHER



IT'S BAD WEATHER



IT'S CLOUDY



IT'S SUNNY



IT'S COOL



IT'S FOGGY



IT'S RAINY



IT'S SNOWING



IT'S STORMY



IT'S WINDY

THERE IS + NOUN



THERE IS A TORNADO

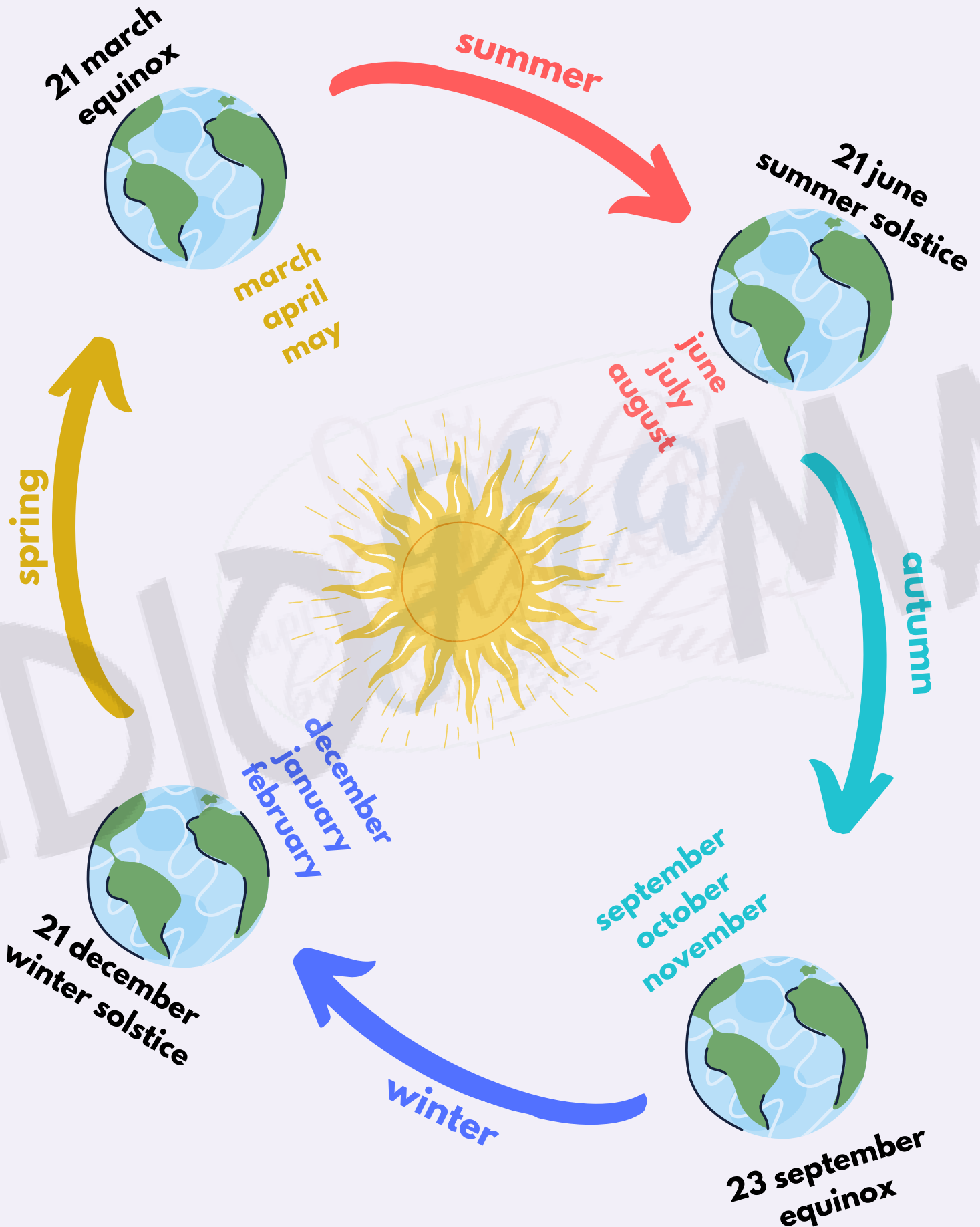


THERE IS A RAINBOW



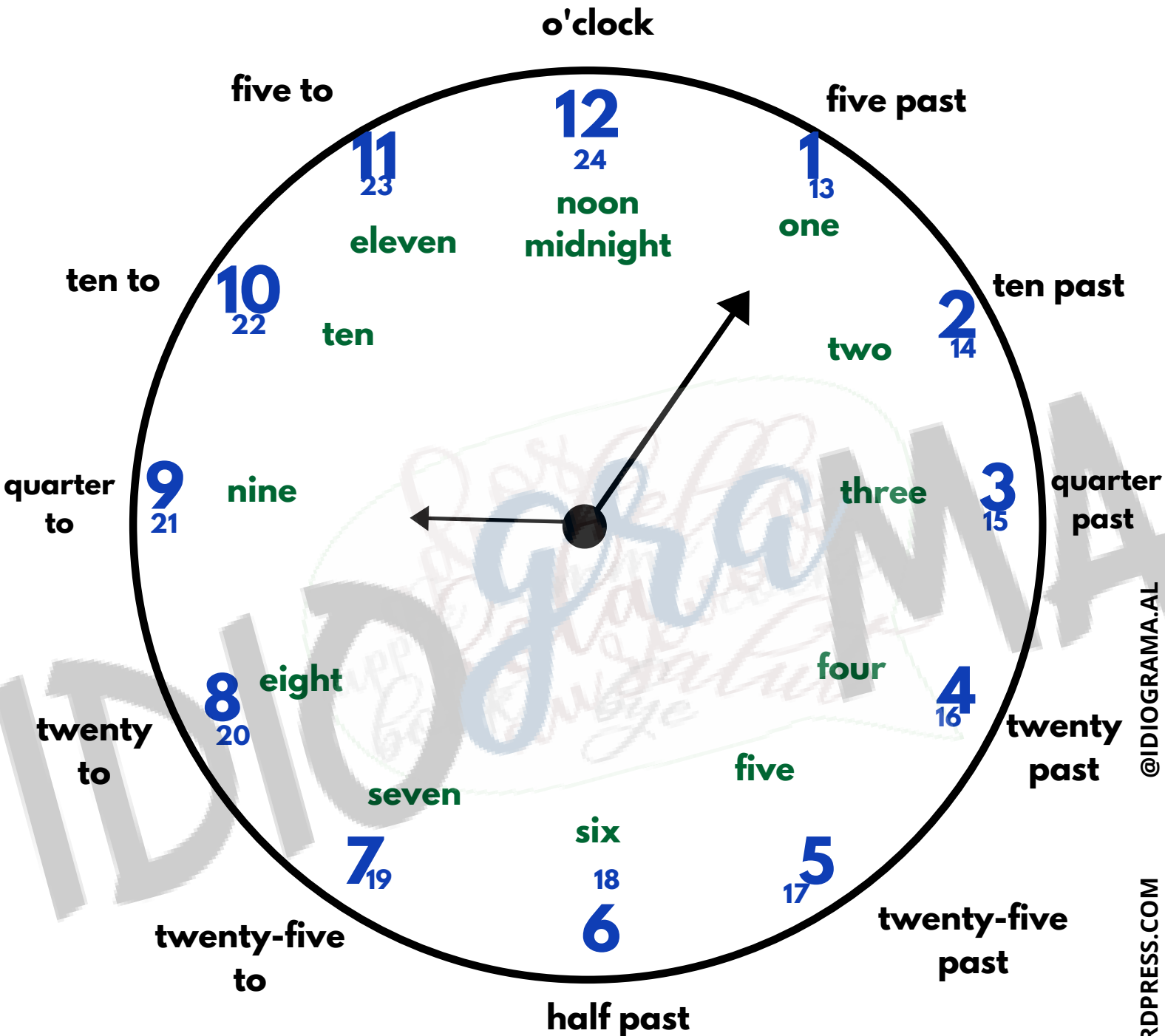
THERE'S HAIL

The seasons and months of the year



TIME

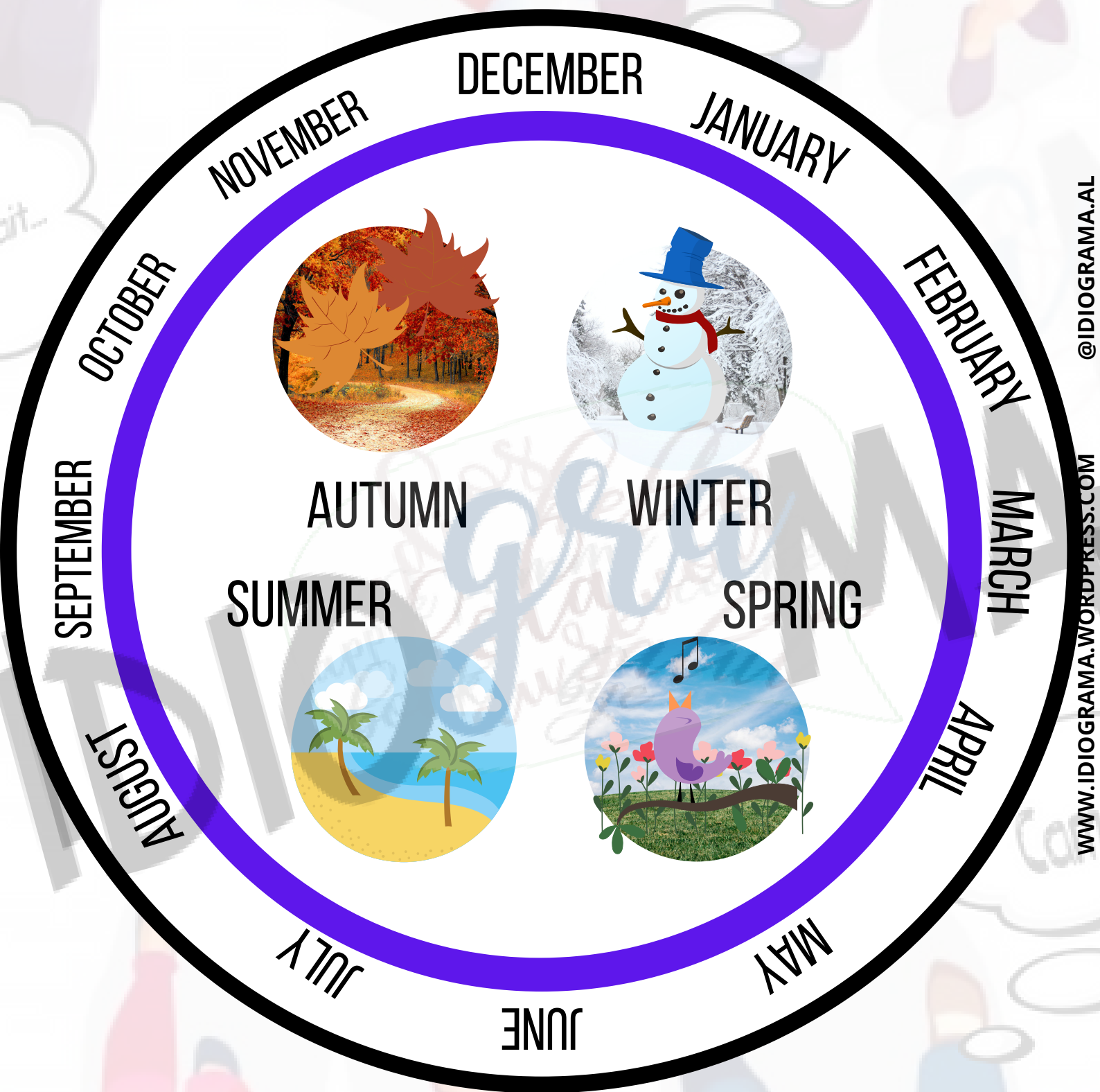
What time is it? **IT'S** five past nine



Para indicar la hora se utiliza:

IT'S + los minutos + past/to + la hora

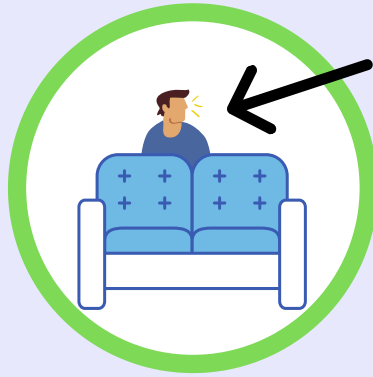
SEASONS AND MONTHS OF THE YEAR



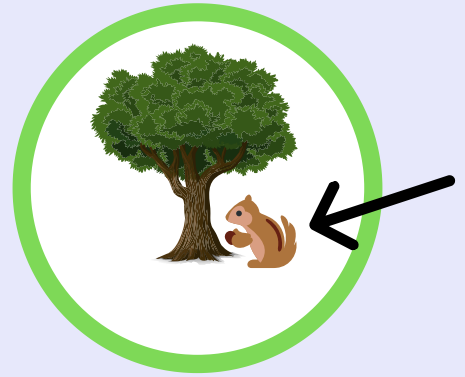
PREPOSITIONS



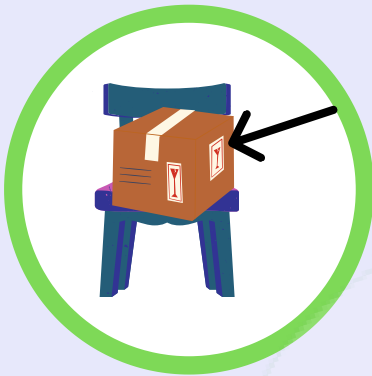
IN FRONT OF



BEHIND



RIGHT



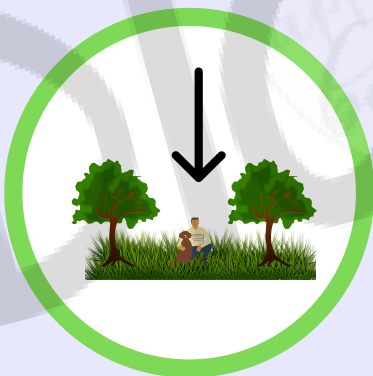
ON



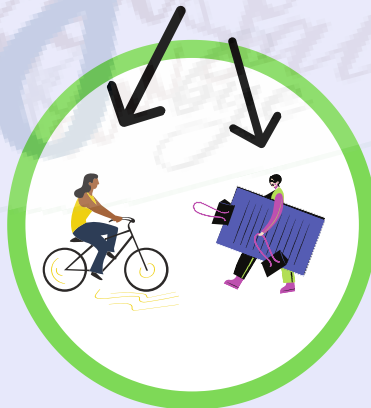
UNDER



LEFT



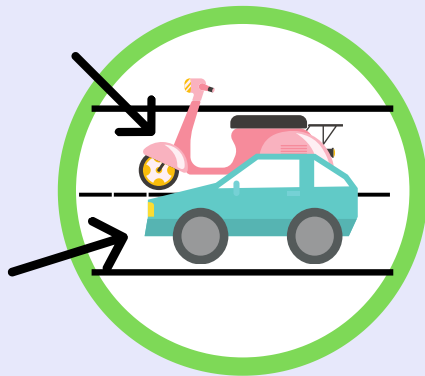
BETWEEN



OPPOSITE

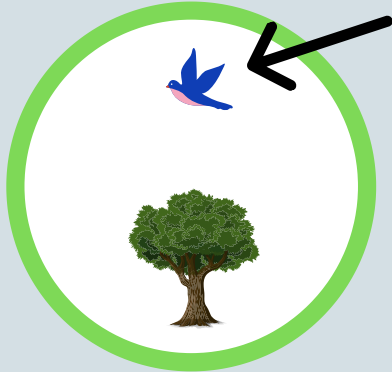


IN



NEXT TO

PREPOSITIONS



OVER



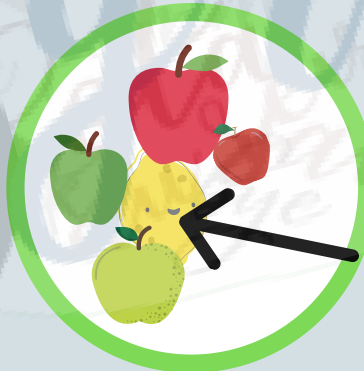
ABOVE



BELOW



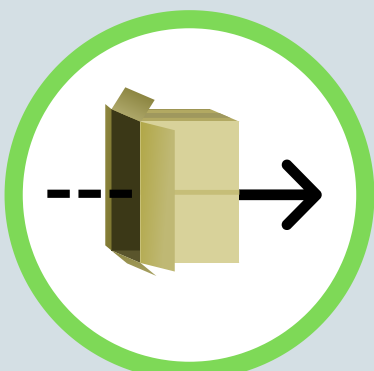
ACROSS



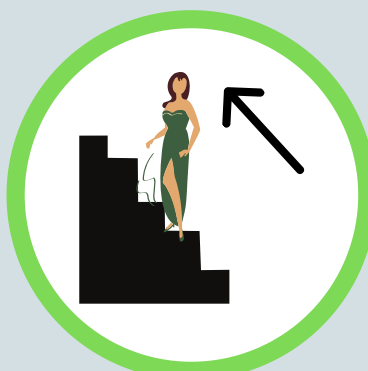
AMONG



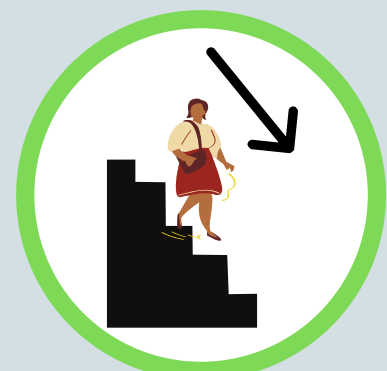
ALONG



THROUGH



UP



DOWN

DAYS OF THE WEEK AND TIMES OF THE DAY

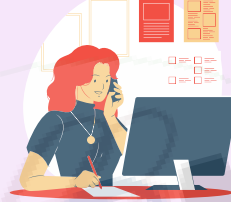
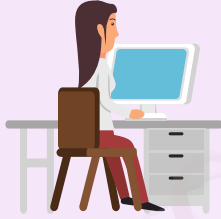
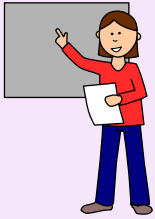
MONDAY

TUESDAY

WEDNESDAY

THURSDAY

FRIDAY



SATURDAY

SUNDAY

WEEKEND



MORNING



NOON



AFTERNOON



NIGHT